

① What is the sine(a)?

② What is cosine(a)?

③ What is tangent(a)?

④ What is the length of h?

⑤ What is the slope of the line through points

(6, 4) and (12, 21)?

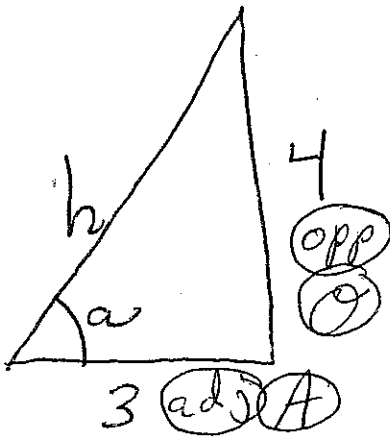
⑥ Monte Carlo formula

is $a = \left(\frac{b}{c}\right)(d)$

or $a = \frac{b}{c}d$

What is a?
 " " b?
 " " c?
 " " d?

Wednesday
 3/1/2017



① $\text{sine}(a) = \frac{4}{\sqrt{3^2+4^2}}$ (SOH)

② $\text{cosine}(a) = \frac{3}{\sqrt{3^2+4^2}}$ (CAH)

③ $\text{tangent}(a) = \frac{4}{3} = \frac{\text{opp}}{\text{adj}}$

④ Length of $h = \sqrt{3^2+4^2} = \sqrt{25} = 5$

⑤ Slope of line through $(6, 4)$ and $(12, 21)$

is $\frac{21-4}{12-6} = \frac{17}{6}$

⑥ What is a^P ← = 2.83

What is b^P ← area of the smaller region.

What is c^P ← # of turtles or points in the smaller region.

What is d^P ← # of points or turtles or shots.

(For $a = \frac{b}{c} d$)

Monte Carlo formula

MONTÉ CARLO