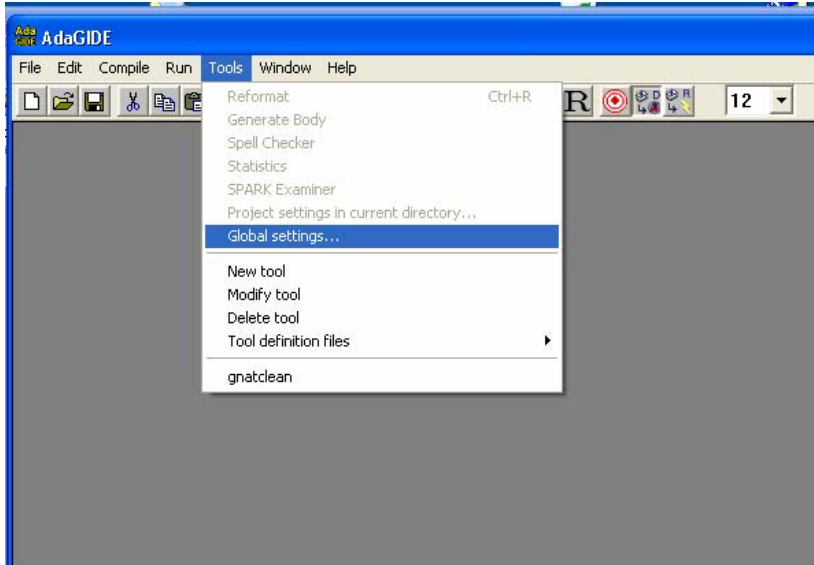
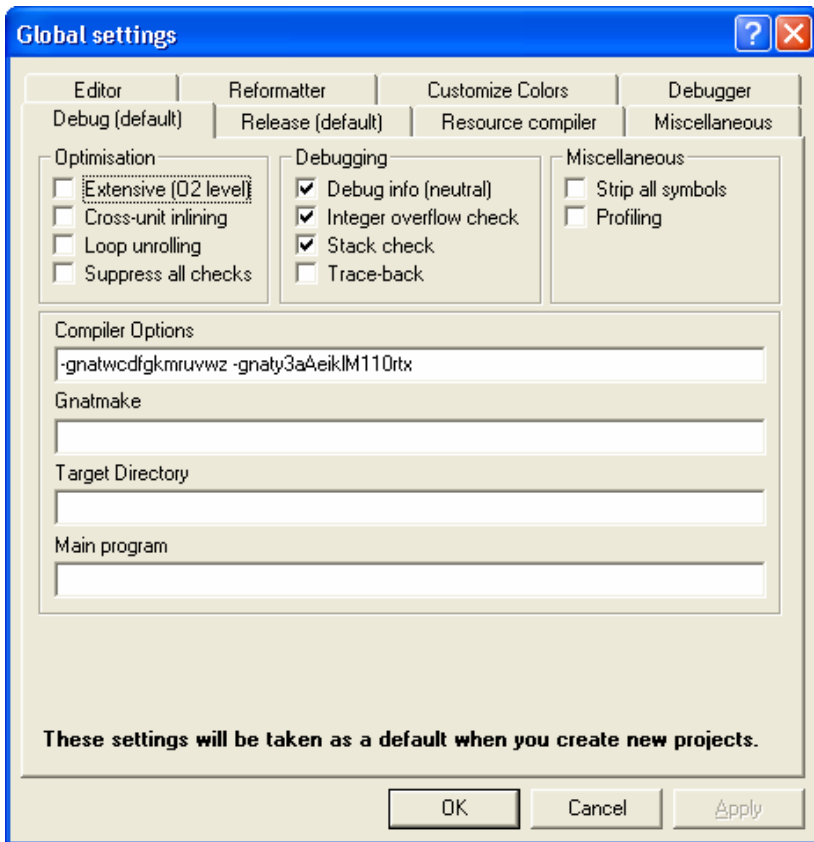


This document gives the AdaGIDE settings used in the Wright Hall computer science labs. To change the AdaGIDE settings on your personal computer, select **Tools → Global Settings**. These settings are not automatically applied. You must select **Tools → Project Settings in current directory...** to use them in a program. These settings are stored in the file `gnat.ago`. An alternative method for applying the settings to a project directory is to place a copy of the file `gnat.ago` in that directory.



The global settings window has 8 tabs. You'll need to make changes on 5 of them.



That is
-gnatwcdfgkmruvwz
-gnaty3aAeiklM110rtx
 in the Compiler Options field
 See the *GNAT Users Guide* for an explanation of all of these options.

