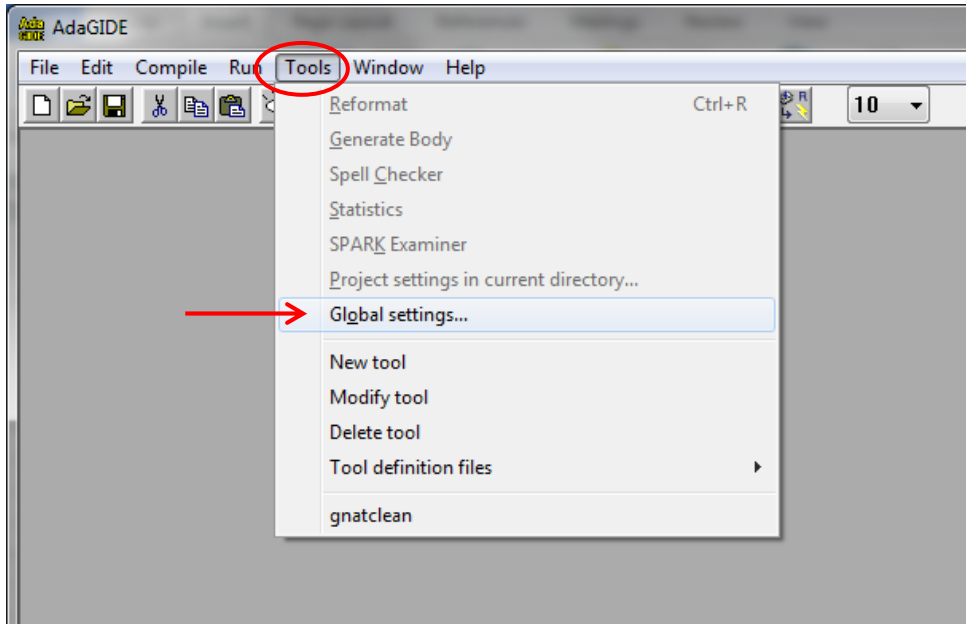
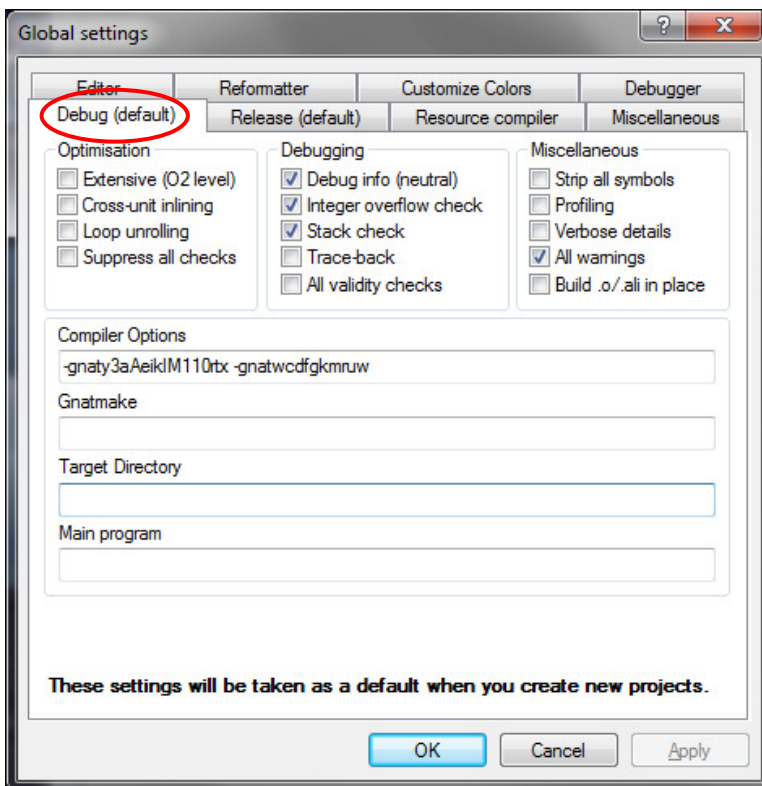


This document gives the AdaGIDE settings used in the Computer Science Department labs in the ITTC and Wright Hall.

To change the AdaGIDE settings on your personal computer, select **Tools → Global Settings...** These settings are not applied immediately. You must select **Tools → Project Settings in current directory...** to use them in the current session. The compiler switch options (see screen shot at the bottom of this page) are stored in the file `gnat.ago`. So an alternative method for applying the compiler switches to a project directory is to place a copy of the file `gnat.ago` in that directory.



The global settings window has 8 tabs. You'll need to make changes to 5 of them.

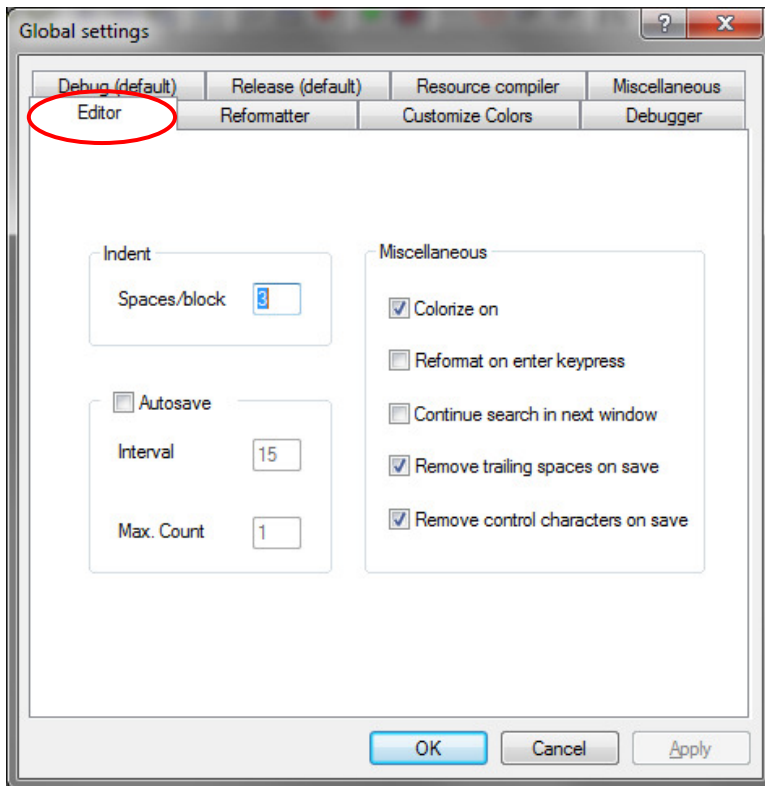


That is,

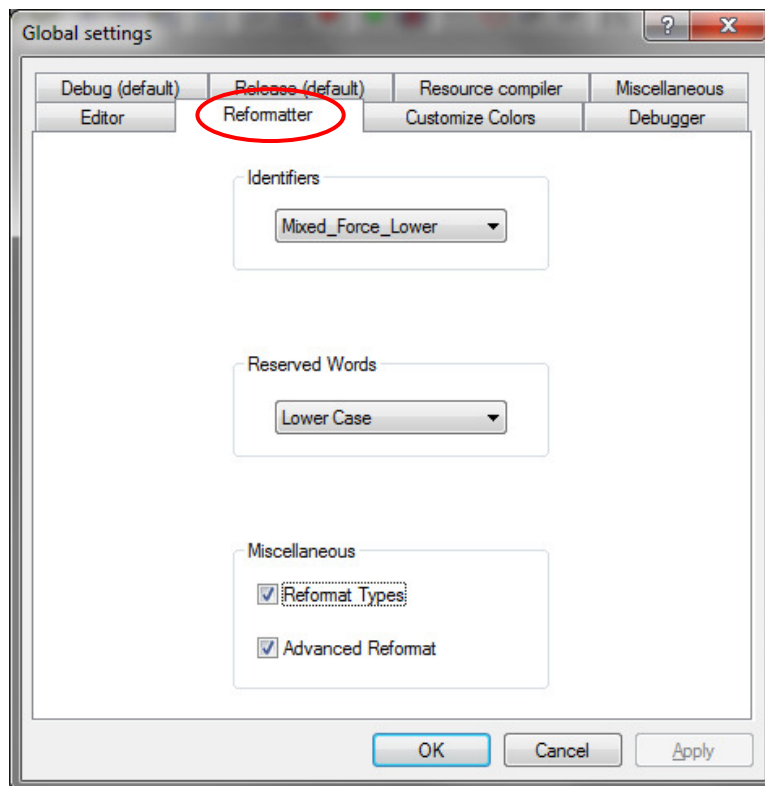
**-gnaty3aAeikIM110rtx**  
**-gnatwcdfgkmruw**

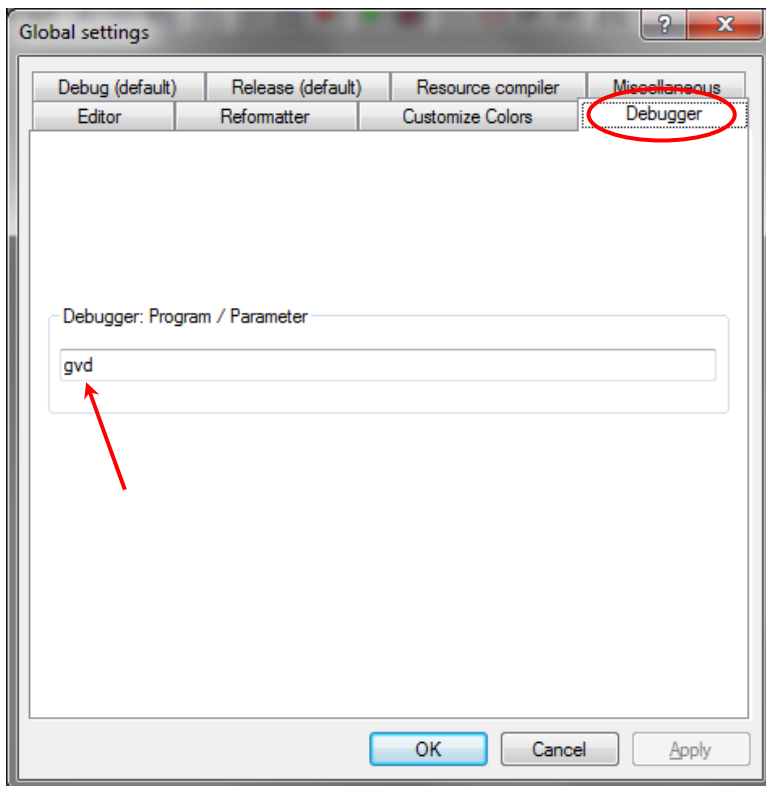
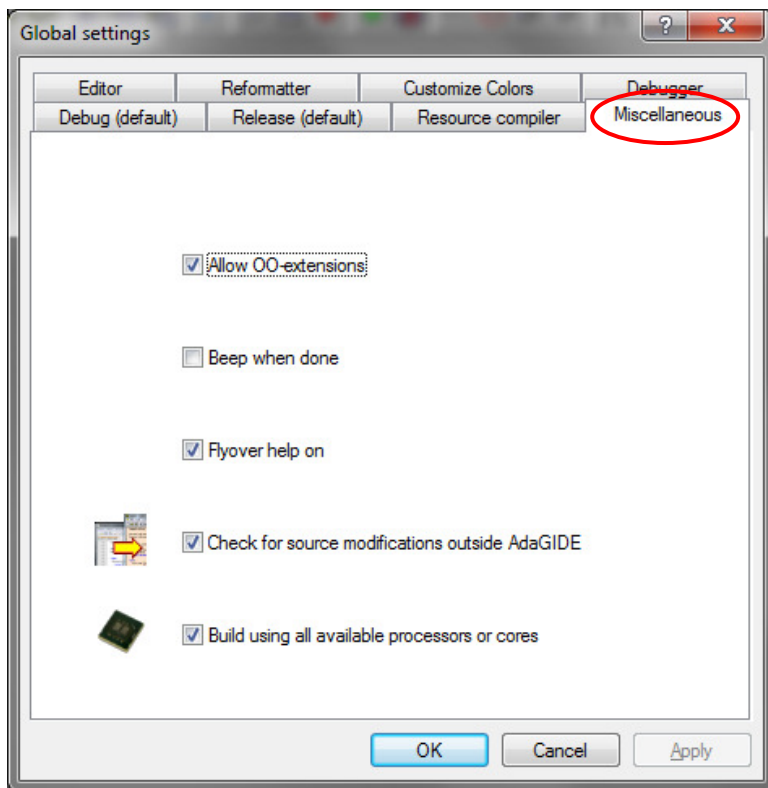
in the Compiler Options field.

See the GNAT Users Guide for an explanation of all of these options.



If you like, check Autosave to have AdaGIDE save your work periodically.





Use **gvd** for the graphical GNU Visual Debugger.  
Use **gdb** for the text-based GNU Project Debugger.